

VISIBLE RF PATH INDICATOR. (REMOVE CAP FOR ACCESS TO MANUAL OVERRIDE)

SPECIFICATIONS:

- FREQ RANGE (GHz) — 12.4 TO 18.0
- VSWR (MAX) — 1.10 : 1 (1.08:1 TYP)
- INS. LOSS (MAX) — 0.10 dB
- ISOLATION (MIN) — 60 dB
- SWITCHING TIME — 50mSec, TYP
- LIFE — 100,000 CYCLES, MIN
- VOLTAGE — SEE P/N SELECTION
- PRESSURE — TO 30 PSIG
- FINISH — CHEM FILM ON FLANGES, SATIN BLACK FINISH REST OF BODY.

NOTES:

- ** MANUAL SWITCH DOES NOT INCLUDE RECEPTACLE.
- BLUE BOXES ARE REQUIRED FIELDS.
- !! IF OPTION IS NOT REQUIRED, LEAVE (GOLD BOX) BLANK
- ## SINGLE POLE DOUBLE THROW (SPDT) OPTION ADDS A SHORTING PLATE ON PORT 4.

VOLTAGE	AMPS	CODE
+22 TO +32	0.9	A
-22 TO -32	0.9	B
+10 TO +14	1.5	C
-10 TO -14	1.5	D
+44 TO +54	0.5	E
-44 TO -54	0.5	F
117VAC	0.5	H
235VAC	0.5	K
MANUAL **		M

PART NO. SELECTION

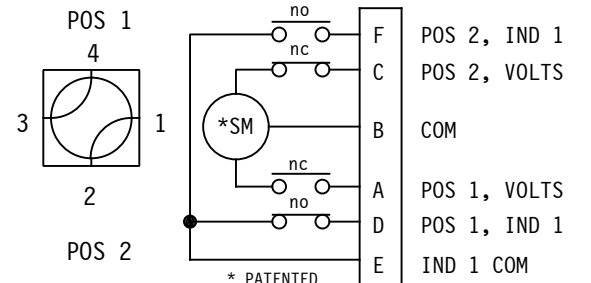
CODE	FLANGE	CODE	!! OPTION
P	PLAIN	M	METRIC THREAD
C	CHOKE		
O	O-RING		

CODE	ENVIRONMENTAL
S	SEALED

U			
SPDT ##	1		
!! OPTION			

!! ELECTRICAL CIRCUIT (IF OTHER THAN STD.) SEE SCHEMATIC PAGE

PART NO. EX.: UAOS3
WR62 LATCHING WG SWITCH, +28VDC, O-RING FLANGE, SEALED, CKT #3.



STANDARD ELECT. CKT
Shown in Pos 1
ONE FORM C

RF PATHS

ZONE	LTR	DESCRIPTION	APV	DATE
	D	DELETED FAILSAFE OPTION. (SEE SEALED FAILSAFE SERIES.)	RR	12/18/18
	C	REPLACED SEALED CAN WITH SEALED CAP. DELETED SS OPTION.	RR	8/22/18
	B	ADDED NOTE 4.	TN	12/17/09
	A	RELEASED.	RR	1/28/04
REVISIONS				

WEB SITE: www.sectormicrowave.com

TOLERANCES:
DECIMALS
2 PLACES: +/- .03
3 PLACES: +/- .010
FRACTIONS: +/- 1/32
ANGLES: +/- 1/2 deg.

DRAWN	AC	1/28/04
CHECKED		
APVD	RR	1/28/04
APVD		

SECTOR MICROWAVE IND., INC.
WR62 WG SW.: SEALED SERIES

SIZE	L	CAGE CODE	53263	WR62 SEALED SER.	D
SCALE	FULL	UNIT WT.		SHEET 1 OF 1	REV.