

SPECIFICATIONS:

- FREQ RANGE _____ 8.20 TO 12.40 GHz
- VSWR _____ 1.05 : 1 MAX
- INSERTION LOSS _____ 0.05 dB MAX
- ISOLATION _____ 60 dB MIN
- SWITCHING TIME _____ 50 mSEC, TYP
- PRESSURE _____ TO 30 PSIG (RF HEAD)
- FINISH _____ CHEM FILM ON FLANGES, BLACK PAINT OR ANODIZE FINISH ON DRIVE HOUSING.

NOTES:

1. ** MANUAL SWITCH DOES NOT INCLUDE RECEPTACLE.
2. BLUE BOXES ARE REQUIRED FIELDS.
3. !! IF OPTION IS NOT REQUIRED, LEAVE (GOLD BOX) BLANK
4. ## SINGLE POLE DOUBLE THROW (SPDT) OPTION ADDS A SHORTING PLATE ON PORT 4.

VOLTAGE	AMPS	CODE
+22 TO +32	0.9	A
-22 TO -32	0.9	B
+10 TO +14	1.5	C
-10 TO -14	1.5	D
+44 TO +54	0.5	E
-44 TO -54	0.5	F
117VAC	0.5	H
235VAC	0.5	K
MANUAL **		M

PART NO. SELECTION

CODE	FLANGE
P	PLAIN
C	CHOKE
O	O-RING
F	CPRF
G	CPRG

CODE	!! OPTION
M	METRIC THREAD

SEE NOTE 4

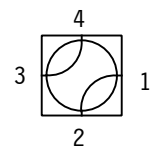
!! OPTION	CODE
SPDT ##	1

NUMBER NOT REQ'D FOR STANDARD CIRCUIT

PART NO. SERIES	X-					
	CODE					
		FAILSAFE	F	!! ELECTRICAL CIRCUIT (IF OTHER THAN STD.)		
		!! OPTION	CODE			

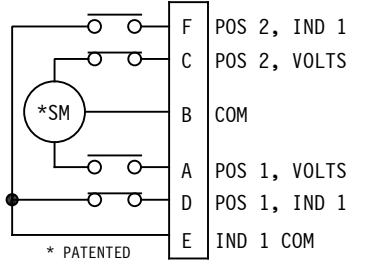
POS 1 (Latching)

De-energize (Failsafe)



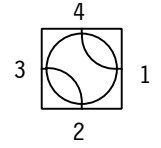
STD. ELECT. CKT.

Shown in Pos. 1 ONE FORM C



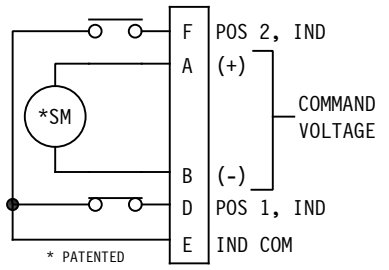
POS 2 (Latching)

Energized (Failsafe)



STD. FAILSAFE ELECT CKT.

Shown in De-energized Pos. ONE FORM C



RF PATHS

PART NO. EX.: X-APFM

WR90 WG SWITCH, +28VDC, PLAIN FLANGE, FAILSAFE, METRIC THDS.

FOR OTHER ELECT CKT'S SEE SCHEMATIC PAGE.

WEB SITE: www.sectormicrowave.com

ZONE	LTR	DESCRIPTION	APV	DATE
	E	FROM SEALED CAP TO SEALED COVER. (FAILSAFE)	RR	2/7/19
	D	REPLACED SEALED COVER CAN WITH SEALED CAP.	RR	8/6/18
	C	CHANGED FINISH FROM "SATIN BLACK FINISH" TO "BLACK PAINT OR ANODIZE ON DRIVE HOUSING"	RR	10/12/16
	B	ADDED NOTE 4 & FAILSAFE COVER CAN	TN	12/17/09
	A	RELEASED.	TN	12/9/03
REVISIONS				

TOLERANCES:
 DECIMALS
 2 PLACES: +/- .03
 3 PLACES: +/- .010
 FRACTIONS: +/- 1/32
 ANGLES: +/- 1/2 deg.

DRAWN	A.C.	12/9/03
CHECKED		
APVD	T.N.	12/9/03
APVD		

SECTOR MICROWAVE IND., INC.			
WR90 W/G SWITCH SERIES			
SIZE L	CAGE CODE	53263	X-xx SERIES
SCALE: NONE	UNIT WT.	SHEET 1 OF 1	E REV.