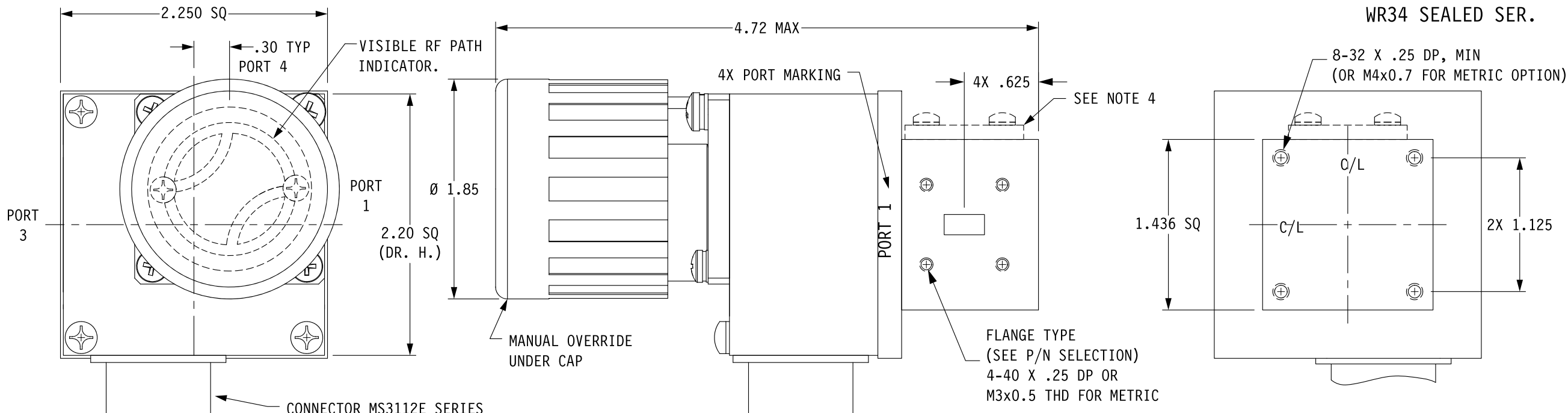


WR34 SEALED SER.



**SPECIFICATIONS;**

|                |  |
|----------------|--|
| FREQ RANGE     | 22.0 - 33.0 GHz                                      |
| VSWR           | 1.10 : 1 MAX   |
| INSERTION LOSS | 0.15 dB MAX  |
| ISOLATION      | 55 dB MIN  |
| SWITCHING TIME | 50 mSec TYP  |
| PRESSURE       | TO 30 PSIG (RF HEAD)                                 |
| FINISH         | CHEM FILM ON FLANGES,<br>SATIN BLACK FINISH ON BODY. |

**NOTES:**

- \*\* MANUAL SWITCH DOES NOT INCLUDE RECEPTACLE.
- BLUE BOXES ARE REQUIRED FIELDS.
- !! IF OPTION IS NOT REQUIRED, LEAVE (GOLD BOX) BLANK
- ## SINGLE POLE DOUBLE THROW (SPDT) OPTION ADDS A SHORTING PLATE ON PORT 4.

| ZONE | LTR | DESCRIPTION   | APV | DATE     |
|------|-----|---|-----|----------|
|      | G   | CORRECTED RF PATH DIAGRAM.                              | TN  | 2/21/23  |
|      | F   | DIM FROM 4.57 MAX TO 4.72 MAX.                          | RR  | 2/7/20   |
|      | E   | REMOVED FAILSAFE OPTION. (SEE SEALED FAILSAFE SERIES)   | RR  | 8/22/19  |
|      | D   | REPLACED SEALED CAN WITH SEALED CAP. DELETED SS OPTION. | RR  | 8/7/18   |
|      | C   | FINISH FROM IRIDITE & ENAMEL TO CHEM FILM & FINISH.     | RR  | 2/10/15  |
|      | B   | ADDED NOTE 4  | TN  | 12/14/09 |
|      | A   | RELEASED.   | TN  | 7/25/06  |

**REVISIONS**

CONNECTOR MS3112E SERIES OR EQUIV. (SIZE DEPENDENT ON CKT)

| VOLTAGE    | AMPS | CODE |
|------------|------|------|
| +22 TO +32 | 0.9  | A    |
| -22 TO -32 | 0.9  | B    |
| +10 TO +14 | 1.5  | C    |
| -10 TO -14 | 1.5  | D    |
| +44 TO +54 | 0.5  | E    |
| -44 TO -54 | 0.5  | F    |
| 117VAC     | 0.5  | H    |
| 235VAC     | 0.5  | K    |
| MANUAL **  |      | M    |

**PART NO. SELECTION**

| CODE | FLANGE |
|------|--------|
| P    | PLAIN  |
| O    | O-RING |

| CODE | !! OPTION     |
|------|---------------|
| M    | METRIC THREAD |

| CODE | ENVIRONMENTAL |
|------|---------------|
| S    | SEALED        |

|                 |      |           |      |
|-----------------|------|-----------|------|
| 34              |      |           |      |
| PART NO. SERIES | 34   | SPDT ##   | 1    |
|                 | CODE | !! OPTION | CODE |

**!! ELECTRICAL CIRCUIT (IF OTHER THAN STD.) SEE SCHEMATIC PAGE**

PART NO. EX.: 34AOS3

WR34 LATCHING WG SWITCH, +28VDC, O-RING COVER FLANGE, SEALED, CIRCUIT #3.

WEB SITE: [www.sectormicrowave.com](http://www.sectormicrowave.com)

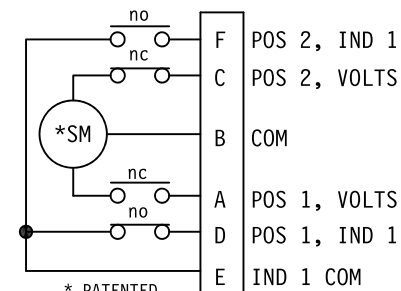
TOLERANCES:  
DECIMALS  
2 PLACES: +/- .03  
3 PLACES: +/- .010  
FRACTIONS: +/- 1/32  
ANGLES: +/- 1/2 deg.

|         |    |         |
|---------|----|---------|
| DRAWN   | AC | 7/25/06 |
| CHECKED |    |         |
| APVD    | RR | 7/25/06 |
| APVD    |    |         |

**SECTOR MICROWAVE IND., INC.**

WR34 WG SW. : SEALED SERIES

|        |      |           |       |                  |        |
|--------|------|-----------|-------|------------------|--------|
| SIZE   | L    | CAGE CODE | 53263 | WR34 SEALED SER. | G      |
| SCALE: | NONE | UNIT WT.  |       | SHEET            | 1 OF 1 |
|        |      |           |       |                  | REV.   |



\* PATENTED

STD. ELECTRICAL CKT. Shown in Position 1 ONE FORM C

