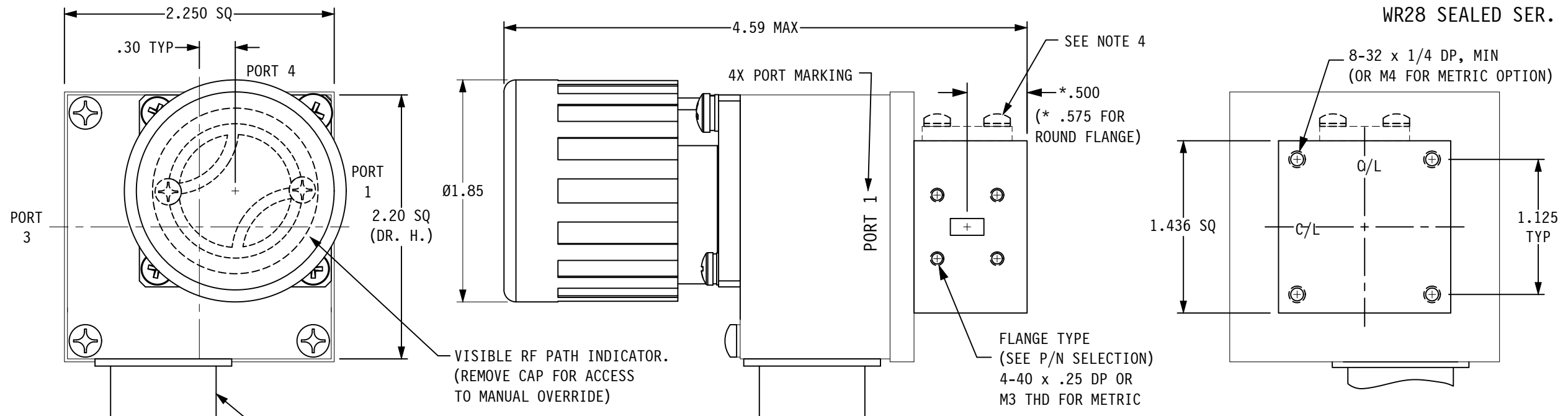


WR28 SEALED SER.



SPECIFICATIONS;

- FREQ RANGE (GHz) — 26.5 - 40.0
- VSWR — 1.15 : 1 MAX, 1.10 : 1 TYP
- INSERTION LOSS — 0.15 dB MAX
- ISOLATION — 55 dB MIN
- SWITCHING TIME — 50 mSec, TYP
- PRESSURE — TO 30 PSIG (RF HEAD)
- FINISH — CHEM FILM ON FLANGES, SATIN BLACK FINISH ON BODY.

NOTES:

1. ** MANUAL SWITCH DOES NOT INCLUDE RECEPTACLE.
2. BLUE BOXES ARE REQUIRED FIELDS.
3. !! IF OPTION IS NOT REQUIRED, LEAVE (GOLD BOX) BLANK
4. ## SINGLE POLE DOUBLE THROW (SPDT) OPTION ADDS A SHORTING PLATE ON PORT 4.

PORT 2
CONNECTOR MS3112E SERIES OR EQUIV. (SIZE DEPENDENT ON CKT)

VISIBLE RF PATH INDICATOR. (REMOVE CAP FOR ACCESS TO MANUAL OVERRIDE)

VOLTAGE	AMPS	CODE
+22 TO +32	0.9	A
-22 TO -32	0.9	B
+10 TO +14	1.5	C
-10 TO -14	1.5	D
+44 TO +54	0.5	E
-44 TO -54	0.5	F
117VAC	0.5	H
235VAC	0.5	K
MANUAL **		M

PART NO. SELECTION

CODE	FLANGE
P	PLAIN
C	CHOKE
O	O-RING
R	ROUND

CODE	!! OPTION
M	METRIC THREAD

SEE NOTE 4

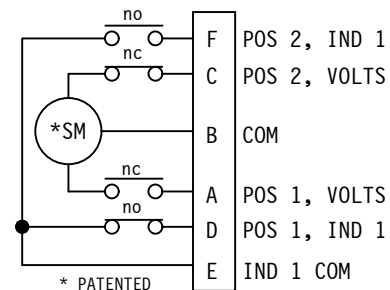
!! OPTION	CODE
SPDT ##	1

CODE	ENVIRONMENTAL
S	SEALED

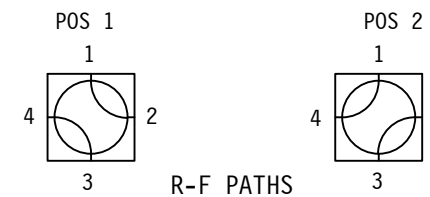
V			
PART NO. SERIES	V CODE	FAILSAFE !! OPTION	F CODE

PART NO. EX.: VAOS3
WR28 LATCHING WG SWITCH, +28VDC, O-RING FLANGE (SQUARE), SEALED, CIRCUIT #3.

!! ELECTRICAL CIRCUIT (IF OTHER THAN STD.) SEE SCHEMATIC PAGE



STD. ELECTRICAL CKT. Shown in Position 1 ONE FORM C



WEB SITE: www.sectormicrowave.com

ZONE	LTR	DESCRIPTION	APV	DATE
	D	CHANGED FROM SEAL CAN TO SEAL CAP. DELETED SS OPTION.	RR	8/10/18
	C	ADDED NOTE 4	TN	12/10/09
	B	UPDATED VSWR SPEC	RR	6/24/09
	A	RELEASED.	TN	7/25/06
REVISIONS				

TOLERANCES:
DECIMALS
2 PLACES: +/- .03
3 PLACES: +/- .010
FRACTIONS: +/- 1/32
ANGLES: +/- 1/2 deg.

DRAWN	AC	7/25/06
CHECKED		
APVD	RR	7/25/06
APVD		

SECTOR MICROWAVE IND., INC.			
WR28 WG SW. : SEALED SERIES			
SIZE L	CAGE CODE 53263	WR28 SEALED SER.	D
SCALE: NONE	UNIT WT.	SHEET 1 OF 1	REV.