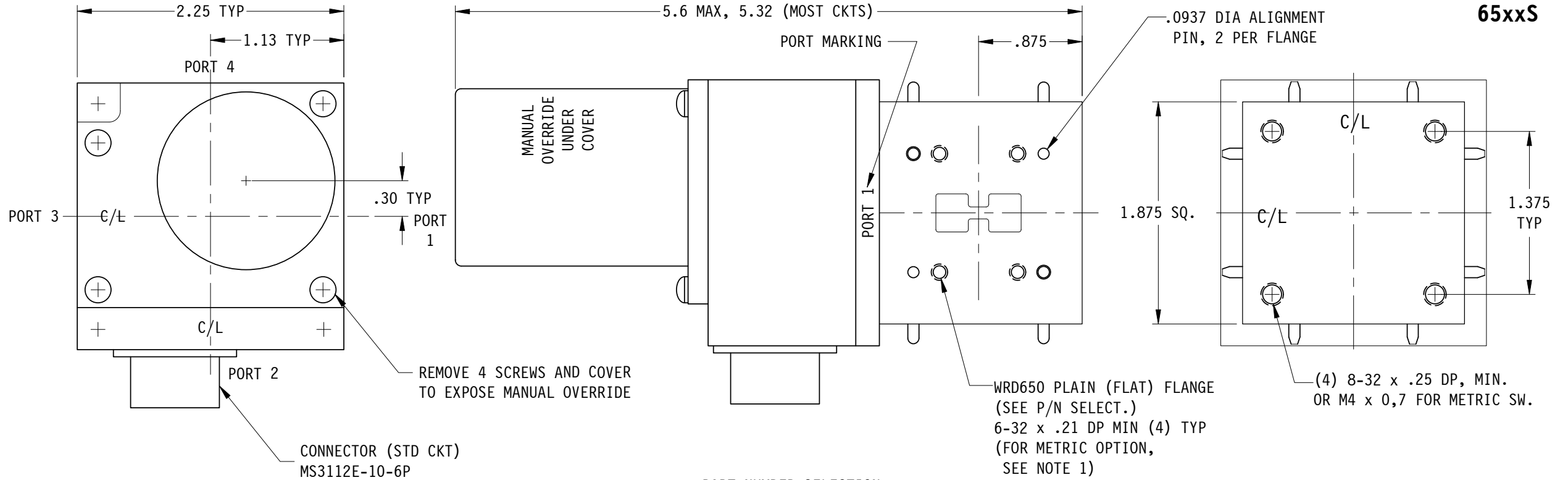


**65xxS**



**SPECIFICATIONS:**

FREQ RANGE \_\_\_\_\_ 6.5 TO 18.0 GHz  
 VSWR \_\_\_\_\_ 1.18 : 1 MAX  
 INSERTION LOSS \_\_\_\_\_ 0.30 db TYP  
 ISOLATION \_\_\_\_\_ 60 db TYP  
 SWITCHING TIME \_\_\_\_\_ 50 mSEC, TYP  
 PRESSURE \_\_\_\_\_ TO 30 PSIG (R-F HEAD)  
 FINISH \_\_\_\_\_ IRIDITE ON FLANGES, SATIN  
 BLACK ENAMEL ON REST OF BODY.

**NOTE:**

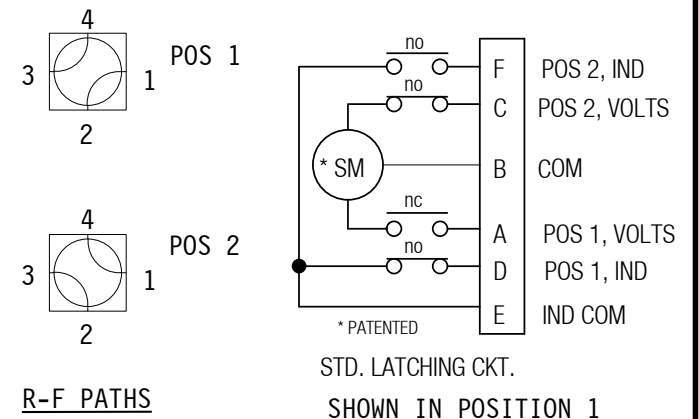
1. M4 THREAD IS LISTED FOR THE METRIC OPTION.  
 THIS MUST BE CONFIRMED BY CUSTOMER.

**PART NUMBER SELECTION**

VOLTAGE		FLANGE		OPTIONS	
+22 TO +32 VDC	A	P	PLAIN	1	SPDT
-22 TO -32 VDC	B	G	GROOVED	F	FAILSAFE
+10 TO +14 VDC	C			*	ELECT. CKT ( IF NON-STD)
-10 TO -14 VDC	D			M	METRIC
+42 TO +54 VDC	E			S	SEALED (Outside Env.)
-42 TO -54 VDC	F				
117 VAC	H				
235 VAC	K				
MANUAL	M				
OTHER					

PART NO.      **65**                   **S**

\* 2 thru 6A



ZONE	LTR	DESCRIPTION	APV	DATE
	A	VSWR WAS 1.15:1 MAX, IS 1.18: 1 MAX	R.R.	6/26/07
	-	RELEASED.	R.K.	2-13-01
<b>REVISIONS</b>				

TOLERANCES: DECIMALS	DRAWN	R.J.	2-13-01
2 PLACES: +/- .03	CHECKED		
3 PLACES: +/- .010	APVD	R.K.	2-13-01
FRACTIONS: +/- 1/64	APVD		
ANGLES: +/- 1/2 deg.			

<b>SECTOR MICROWAVE IND., INC.</b>			
WRD650 SEALED SERIES			
SIZE <b>L</b>	MFG CODE <b>53263</b>	<b>65xxS</b>	
SCALE: NONE	UNIT WT.	SHEET 1 OF 1	A REV.