

**SPECIFICATIONS:**

- FREQ RANGE (GHz) — 12.4 TO 18.0
- VSWR (MAX) — 1.10 : 1 (1.08:1 TYP)
- INS. LOSS (MAX) — 0.10 db
- ISOLATION (MIN) — 60 db
- SWITCHING TIME — 50mSec, TYP
- LIFE — 100,000 CYCLES, MIN
- VOLTAGE — SEE P/N SELECTION
- PRESSURE — TO 30 PSIG
- FINISH — IRIDITE ON FLANGES, SATIN BLACK FINISH REST OF BODY.

VOLTAGE	AMPS	CODE
+22 TO +32	0.9	A
-22 TO -32	0.9	B
+10 TO +14	1.5	C
-10 TO -14	1.5	D
+44 TO +54	0.5	E
-44 TO -54	0.5	F
117VAC	0.5	H
235VAC	0.5	K
MANUAL **		M

**PART NO. SELECTION**

CODE	FLANGE
P	PLAIN
C	CHOKE
O	O-RING

CODE	!! OPTION
M	METRIC THREAD

CODE	ENVIRONMENTAL
S	SEALED
SS	## SEALED WITH REMOVABLE SCREW

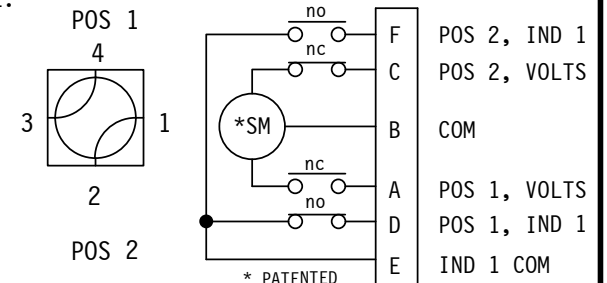
!! OPTION	CODE
SPDT	1

PART NO. SERIES	U	FAILSAFE	F
	CODE		!! OPTION

PART NO. EX.: UAOS3

WR62 LATCHING WG SWITCH, +28VDC, O-RING FLANGE, SEALED, CIRCUIT #3.

## TOP EXTERIOR SCREW CAN BE REMOVED ALLOWING ACCESS TO MANUAL OVERRIDE. No. 1 PHILLIPS SCREWDRIVER REQUIRED.



STANDARD ELECT. CKT  
Shown in Pos 1  
ONE FORM C

**!! ELECTRICAL CIRCUIT (IF OTHER THAN STD.) SEE SCHEMATIC PAGE**

R-F PATHS

**NOTES:**

1. \*\* MANUAL SWITCH DOES NOT INCLUDE RECEPTACLE.
2. BLUE BOXES ARE REQUIRED FIELDS.
3. !! IF OPTION IS NOT REQUIRED, LEAVE (GOLD BOX) BLANK

WEB SITE: [www.sectormicrowave.com](http://www.sectormicrowave.com)

ZONE	LTR	DESCRIPTION	APV	DATE
	A	RELEASED.	RR	1/28/04
<b>REVISIONS</b>				

TOLERANCES: DECIMALS 2 PLACES: +/- .03 3 PLACES: +/- .010 FRACTIONS: +/- 1/32 ANGLES: +/- 1/2 deg.	DRAWN	AC	1/28/04
	CHECKED		
	APVD	RR	1/28/04
	APVD		

<b>SECTOR MICROWAVE IND., INC.</b>			
WR62 WG SW.: SEALED SERIES			
SIZE	L	CAGE CODE	53263
SCALE: FULL	UNIT WT.	SHEET 1 OF 1	REV. A