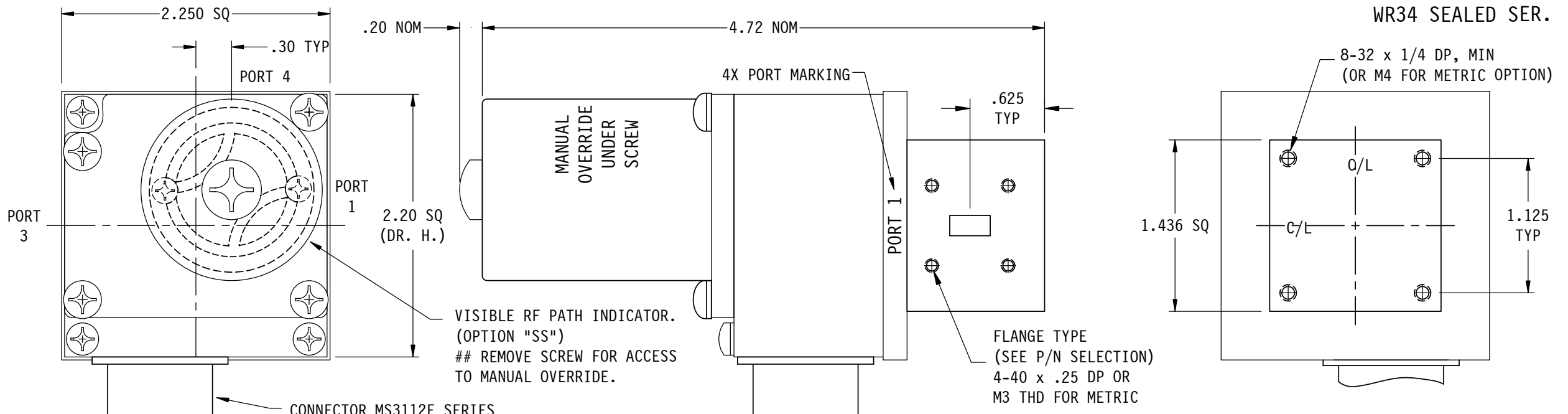


WR34 SEALED SER.



SPECIFICATIONS;
 FREQ RANGE (GHz) — 22.0 - 33.0
 VSWR — 1.10 : 1 MAX
 INSERTION LOSS — 0.15 db, MAX
 ISOLATION — 55 db, MIN
 SWITCHING TIME — 50 mSec, TYP
 PRESSURE — TO 30 PSIG (R-F HEAD)
 FINISH — IRIDITE ON FLANGES, SATIN BLACK ENAMEL ON BODY.

NOTES:
 1. ** MANUAL SWITCH DOES NOT INCLUDE RECEPTACLE.
 2. BLUE BOXES ARE REQUIRED FIELDS.
 3. !! IF OPTION IS NOT REQUIRED, LEAVE (GOLD BOX) BLANK

VOLTAGE	AMPS	CODE
+22 TO +32	0.9	A
-22 TO -32	0.9	B
+10 TO +14	1.5	C
-10 TO -14	1.5	D
+44 TO +54	0.5	E
-44 TO -54	0.5	F
117VAC	0.5	H
235VAC	0.5	K
MANUAL **		M

PART NO. SELECTION

CODE	FLANGE
P	PLAIN
O	O-RING

CODE	!! OPTION
M	METRIC THREAD

TOP EXTERIOR SCREW CAN BE REMOVED ALLOWING ACCESS TO MANUAL OVERRIDE. No. 1 PHILLIPS SCREWDRIER REQUIRED.

CODE	ENVIRONMENTAL
S	SEALED
SS	## SEALED WITH REMOVABLE SCREW

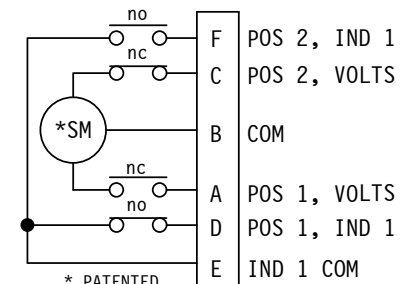
!! OPTION	CODE
SPDT	1

34			
PART NO. SERIES	34	CODE	
!! OPTION	CODE	FAILSAFE	F
!! OPTION	CODE		

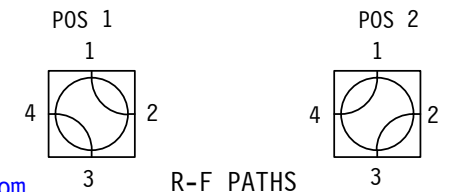
PART NO. EX.: 34AOS3

WR34 LATCHING WG SWITCH, +28VDC, O-RING COVER FLANGE, SEALED, CIRCUIT #3.

!! ELECTRICAL CIRCUIT (IF OTHER THAN STD.) SEE SCHEMATIC PAGE



STD. ELECTRICAL CKT. Shown in Position 1 ONE FORM C



WEB SITE: www.sectormicrowave.com

ZONE	LTR	DESCRIPTION	APV	DATE
	A	RELEASED.	TN	7/25/06
REVISIONS				

TOLERANCES: DECIMALS 2 PLACES: +/- .03 3 PLACES: +/- .010 FRACTIONS: +/- 1/32 ANGLES: +/- 1/2 deg.		DRAWN	AC	7/25/06	SECTOR MICROWAVE IND., INC.
		CHECKED			
		APVD	RR	7/25/06	
		APVD			
		SCALE: NONE	UNIT WT.	SHEET 1 OF 1	A REV.

WR34 WG SW. : SEALED SERIES
 WR34 SEALED SER.
 CAGE CODE 53263