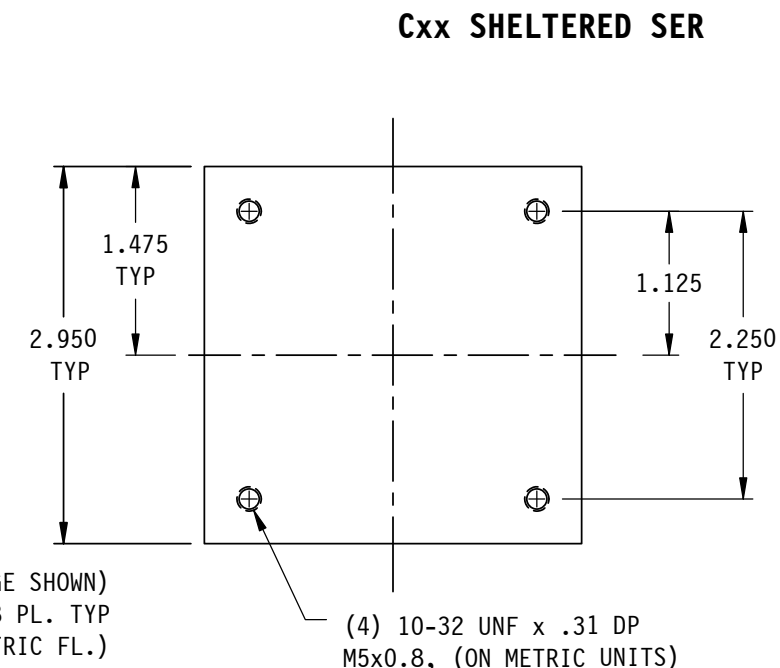
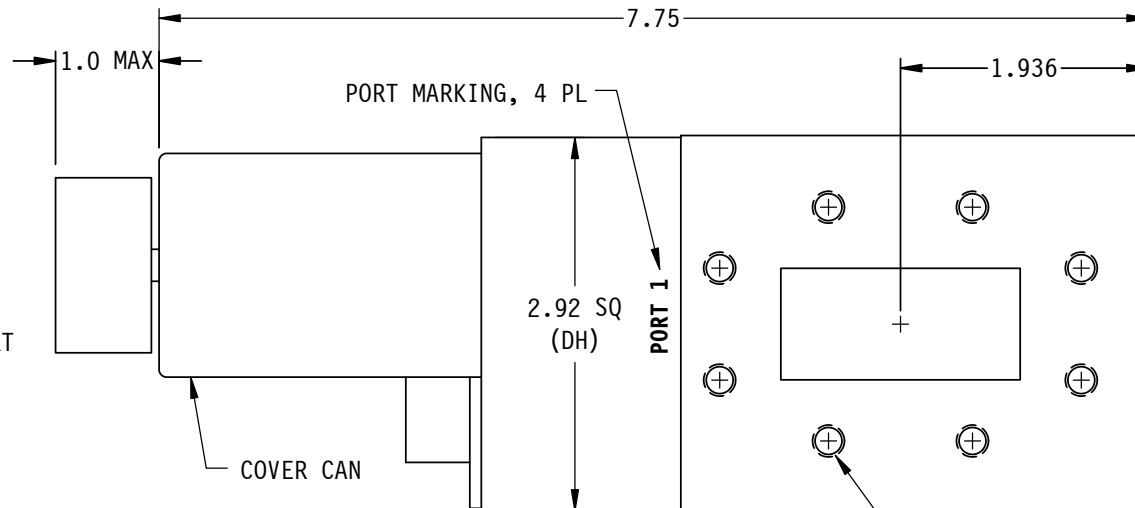
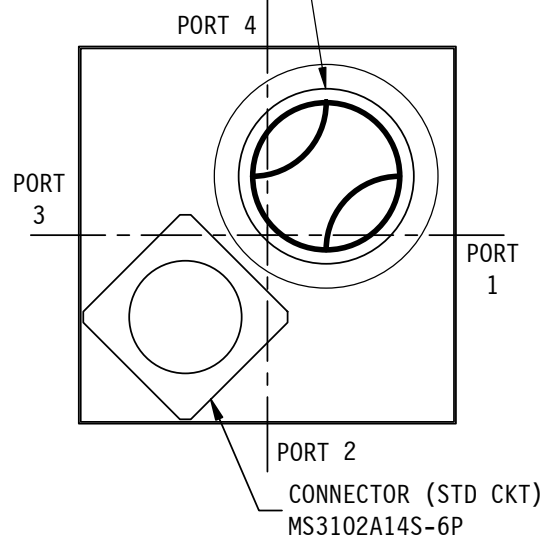


MANUAL OVERRIDE KNOB
& R-F PATH INDICATOR



SPECIFICATIONS;

- FREQ RANGE — 3.95 TO 5.85 GHz
- VSWR — 1.05 : 1 MAX
- INSERTION LOSS — .02 db MAX
- ISOLATION — 80 db MIN
- SWITCHING TIME — 80 mSec
- PRESSURE — TO 30 PSIG (R-F HEAD ONLY)
- MATERIAL — ALUMINUM HOUSING
- FINISH — SATIN BLACK ENAMEL & IRIDITE ON FLANGE FACES
- LIFE — 200,000 OPERATIONS, MIN.

NOTES:

- ** MANUAL SWITCH DOES NOT INCLUDE RECEPTACLE.
- BLUE BOXES ARE REQUIRED FIELDS.
- !! IF OPTION IS NOT REQUIRED, LEAVE (GOLD BOX) BLANK

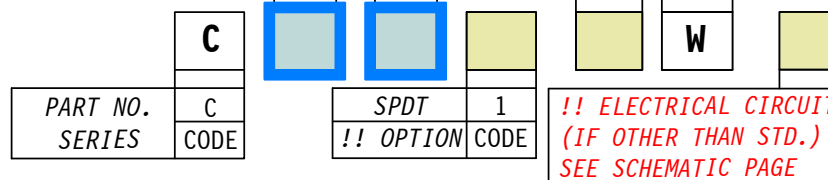
VOLTAGE	AMPS	CODE
+22 TO +32	2	A
-22 TO -32	2	B
+10 TO +14	2	C
-10 TO -14	2	D
+44 TO +54	1	E
-44 TO -54	1	F
117VAC	0.5	H
235VAC	0.5	K
MANUAL **		M

PART NO. SELECTION

CODE	FLANGE	CODE	!! OPTION
F	CPRF	M	METRIC THREAD
G	CPRG		

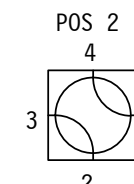
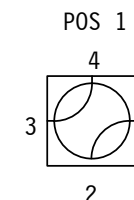
(USED IN A SHELTERED ENVIRONMENT)

CODE	ENVIRONMENTAL
W	SHELTERED

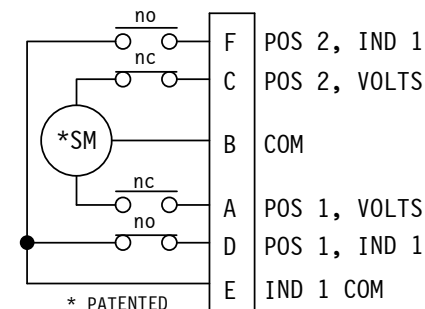


PART NO. EX.: CAGMW2

WR187 WG SWITCH, +28VDC, CPRG (GROOVED)
FLANGE, METRIC THDS, SHELTERED, CKT #2



R-F PATHS



* PATENTED

STD. ELECTRICAL CKT.
Shown in Position 1
ONE FORM C

ZONE	LTR	DESCRIPTION	APV	DATE
	A	REVISED DRIVE ASSY. REDRAWN ON CAD NO CHANGE (2/25/00)	JP	2-2-93
REVISIONS				

TOLERANCES: DECIMALS 2 PLACES: +/- .03 3 PLACES: +/- .010 FRACTIONS: +/- 1/32 ANGLES: +/- 1/2 deg.	DRAWN	A.C.	7/17/89
	CHECKED		
	APVD	J.P.	7/17/89
	APVD		

SECTOR MICROWAVE IND., INC.			
WR187 SHELTERED W/G SW. SER.			
SIZE	L	CAGE CODE	53263
Cxx SHELTERED SERIES		A	
SCALE: 1=1.5	UNIT WT.	SHEET	1 OF 1
			REV.