

SPECIFICATIONS:
 FREQ RANGE ——— 4.90 TO 7.05 GHz
 VSWR ——— 1.05 : 1 MAX
 INSERTION LOSS ——— 0.02 db MAX
 ISOLATION ——— 70 db MIN
 SWITCHING TIME ——— 80 mSEC TYP
 PRESSURE ——— TO 30 PSIG (R-F HEAD ONLY)
 MATERIAL ——— ALUMINUM HOUSING
 FINISH ——— IRIDITE & SATIN BLACK ENAMEL (EXCEPT FLANGE FACES)
 LIFE ——— 200,000 OPERATIONS, MIN.

NOTES:
 1. ** MANUAL SWITCH DOES NOT INCLUDE RECEPTACLE.
 2. BLUE BOXES ARE REQUIRED FIELDS.
 3. !! IF OPTION IS NOT REQUIRED, LEAVE (GOLD BOX) BLANK

VOLTAGE	AMPS	CODE
+22 TO +32	2	A
-22 TO -32	2	B
+10 TO +14	2	C
-10 TO -14	2	D
+44 TO +54	1	E
-44 TO -54	1	F
117VAC	0.5	H
235VAC	0.5	K
MANUAL **		M

PART NUMBER SELECTION

CODE	FLANGE
F	CPRF
G	CPRG

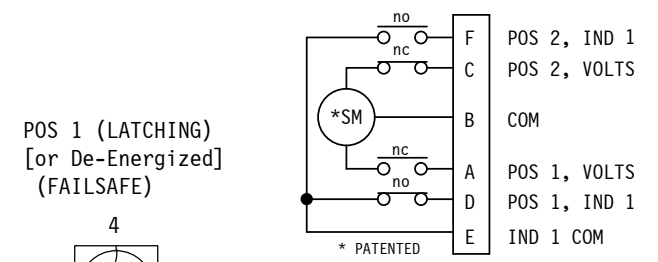
CODE	!! OPTION
M	METRIC THREAD

!! OPTION	CODE
SPDT	1

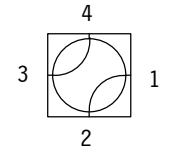
5					
PART NO.	5				
SERIES	CODE				

FAILSAFE	F
!! OPTION	CODE

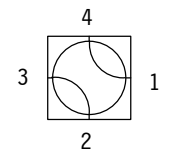
PART NO. EX.: 5AFFM
 WR159 WG SWITCH, +28VDC, CPRF FLANGE, FAILSAFE, METRIC THDS.



POS 1 (LATCHING) [or De-Energized] (FAILSAFE)

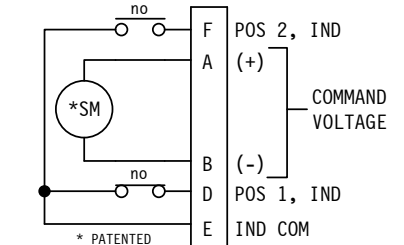


POS 2 (LATCHING) [or Energized] (FAILSAFE)



R-F PATHS

* PATENTED
 STD. ELECTRICAL CKT. Shown in Position 1 ONE FORM C



* PATENTED
 STD. FAILSAFE ELECT CKT. Shown in De-energized Pos. ONE FORM C

WEB SITE: www.sectormicrowave.com

ZONE	LTR	DESCRIPTION	APV	DATE
	A	RELEASED.	RR	10/6/06
REVISIONS				

TOLERANCES: DECIMALS 2 PLACES: +/- .03 3 PLACES: +/- .010 FRACTIONS: +/- 1/64 ANGLES: +/- 1/2 deg.	DRAWN	A.C.	10/6/06
	CHECKED		
	APVD	R.R.	10/6/06
	APVD		

SECTOR MICROWAVE IND., INC.

WR159 WG SWITCH, LIGHTWEIGHT SERIES

SIZE	L	MFG CODE	53263	5 (SEE P/N CHART)	A
SCALE: NONE	UNIT WT.	SHEET	1 OF 1	REV.	