

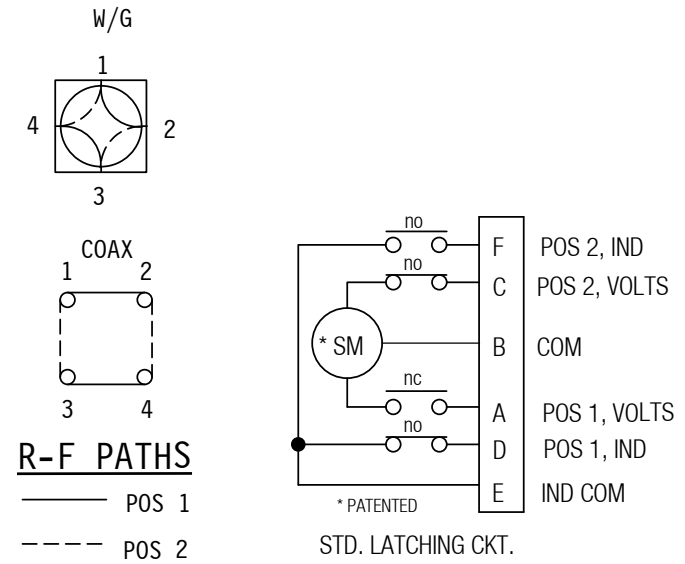
SPECIFICATIONS:

	WG	COAX
FREQ RANGE	4.90 TO 7.05 GHz	4.90 TO 7.05 GHz (OR TBD)
VSWR	1.05 : 1 MAX	1.3 : 1 MAX
INSERTION LOSS	0.02 db MAX	0.3 db MAX
ISOLATION	70 db MIN	60 db MIN
SWITCHING TIME	80 mSEC TYP	
PRESSURE	TO 30 PSIG (R-F HEAD ONLY)	
MATERIAL	ALUMINUM HOUSING	
FINISH	IRIDITE & SATIN BLACK ENAMEL (EXCEPT FLANGE FACES)	
LIFE	200,000 OPERATIONS, MIN.	

VOLTAGE	FLANGE	OPTIONS
+22 TO +32 VDC	A	* ELECT. CKT (IF NON-STD)
-22 TO -32 VDC	B	W SHELTERED (SHELTERED ENV)
+10 TO +14 VDC	C	M METRIC
-10 TO -14 VDC	D	OTHER
+42 TO +54 VDC	E	
-42 TO -54 VDC	F	
117 VAC	H	
235 VAC	K	
MANUAL	M	

PART NO. **5N**

* 2 THRU 6A
NOTE: FOR SEALED SWITCH SEE OTHER OUTLINE DWG OR CONTACT COMPANY.



ZONE	LTR	DESCRIPTION	APV	DATE
	-	RELEASED	TN	7/11/00
REVISIONS				

TOLERANCES: DECIMALS 2 PLACES: +/- .03 3 PLACES: +/- .010 FRACTIONS: +/- 1/64 ANGLES: +/- 1/2 deg.	DRAWN A.C. 7/11/00	SECTOR MICROWAVE IND., INC.	
CHECKED /s/			
APVD /s/	T.N. 7/11/00	WR159 DUAL WG/TYP N SW., LIGHTWT SER.	
APVD /s/		SIZE	MFG CODE 53263
		UNIT WT.	5Nxxx SERIES
		SHEET	OF
		REV	