

SPECIFICATIONS;

	W/G	COAX
FREQ RANGE	7.05 - 10.0 GHz	7.0 - 10.0
VSWR	1.05 : 1 Typ. (1.08:1 Max)	1.3 : 1 Max.
INSERTION LOSS	0.05 db, Max.	0.35 db, Max.
ISOLATION	60 db, Min.	60 db, Min.
RF POWER	5KW AVG	50W Max.
SWITCHING TIME	60 mSec, Typ.	
PRESSURE	To 30 PSIG	
FINISH	IRIDITE ON FLANGE FACES, SATIN BLACK FINISH	

- NOTES:
- ** MANUAL SWITCH DOES NOT INCLUDE RECEPTACLE.
 - BLUE BOXES ARE REQUIRED FIELDS.
 - !! IF OPTION IS NOT REQUIRED, LEAVE (GOLD BOX) BLANK

VOLTAGE AMPS CODE

+22 TO +32	0.9	A
-22 TO -32	0.9	B
+10 TO +14	1.5	C
-10 TO -14	1.5	D
+44 TO +54	0.5	E
-44 TO -54	0.5	F
117VAC	1.2	H
235VAC	0.5	K
MANUAL **		M

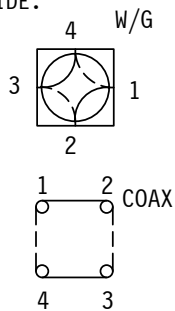
PART NO. SELECTION

CODE	FLANGE
P	PLAIN
C	CHOKE
O	O-RING
F	CPRF
G	CPRG

CODE	!! OPTION
M	METRIC THREAD

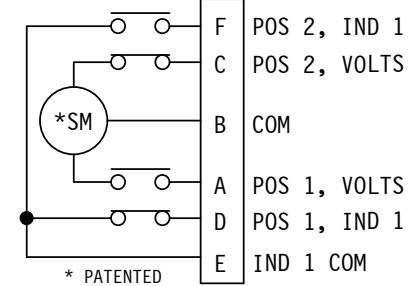
CODE	ENVIRONMENTAL
S	SEALED
SS	## SEALED WITH REMOVABLE SCREW

TOP EXTERIOR SCREW CAN BE REMOVED ALLOWING ACCESS TO MANUAL OVERRIDE. No. 1 PHILLIPS SCREWDRIVER REQUIRED.



R-F PATHS

— POS 1
- - - POS 2



STD. ELECT. CKT.
Shown in Pos. 1
ONE FORM C

PART NO. SERIES	HS-CODE	SPDT	1	!! OPTION	CODE

PART NO. EX.: HS-APMS2
WR12 WG/SMA COAX SWITCH, +28VDC, PLAIN FLANGE, METRIC THDS., SEALED, CKT #2

!! ELECTRICAL CIRCUIT (IF OTHER THAN STD.) SEE SCHEMATIC PAGE

WEB SITE: www.sectormicrowave.com

ZONE	LTR	DESCRIPTION	APV	DATE	TOLERANCES: DECIMALS 2 PLACES: +/- .03 3 PLACES: +/- .010 FRACTIONS: +/- 1/64 ANGLES: +/- 1/2 deg.	DRAWN	J TRACY	1/28/04	SECTOR MICROWAVE IND., INC.				
	A	RELEASED	RR	1/28/04		CHECKED			WR12 WG/SMA COAX SEALED SW. SER.				
						APVD	RR	1/28/04	SIZE L	MFG CODE	53263	HS-xxS SERIES	A
		REVISIONS				APVD			SCALE: NONE	UNIT WT.		SHEET 1 OF 1	REV.