

H-xxS SEALED SER.

SPECIFICATIONS;

- FREQ RANGE — 7.05 - 10.0 GHz
- VSWR — 1.05 : 1 Typ (1.08:1 Max.)
- INSERTION LOSS — 0.05 db, Max.
- ISOLATION — 60 db, Min.
- SWITCHING TIME — 60 mSec, Typ.
- PRESSURE — To 30 PSIG
- FINISH — IRIDITE ON FLANGE FACES, SATIN BLACK FINISH

NOTES:

1. ** MANUAL SWITCH DOES NOT INCLUDE RECEPTACLE.
2. BLUE BOXES ARE REQUIRED FIELDS.
3. !! IF OPTION IS NOT REQUIRED, LEAVE (GOLD BOX) BLANK

VOLTAGE	AMPS	CODE
+22 TO +32	0.9	A
-22 TO -32	0.9	B
+10 TO +14	1.5	C
-10 TO -14	1.5	D
+44 TO +54	0.5	E
-44 TO -54	0.5	F
117VAC	0.5	H
235VAC	0.5	K
MANUAL **		M

PART NO. SELECTION

CODE	FLANGE
P	PLAIN
C	CHOKE
O	O-RING
F	CPRF
G	CPRG

CODE	!! OPTION
M	METRIC THREAD

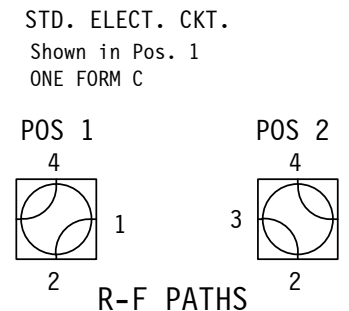
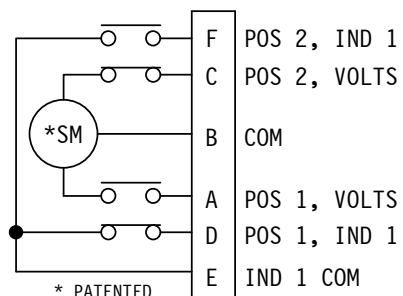
TOP EXTERIOR SCREW CAN BE REMOVED ALLOWING ACCESS TO MANUAL OVERRIDE. No. 1 PHILLIPS SCREWDRIVER REQUIRED.

CODE	ENVIRONMENTAL
S	SEALED
SS	## SEALED WITH REMOVABLE SCREW

!! OPTION	CODE
SPDT	1

H- [Blue Box] [Blue Box] [Gold Box] [Gold Box] [Gold Box] [Blue Box] [Gold Box]
PART NO. SERIES H- CODE
FAILSAFE F
!! OPTION CODE
!! ELECTRICAL CIRCUIT (IF OTHER THAN STD.) SEE SCHEMATIC PAGE

PART NO. EX.: H-APS2
 WR12 WG SWITCH, +28VDC, PLAIN FLANGE, SEALED, CKT #2



WEB SITE: www.sectormicrowave.com

B	IN SPECS: 1.05:1 Typ WAS 1.05:1 Max	RR	8/22/08	TOLERANCES: DECIMALS 2 PLACES: +/- .03 3 PLACES: +/- .010 FRACTIONS: +/- 1/64 ANGLES: +/- 1/2 deg.	DRAWN	J TRACY	1/28/04	SECTOR MICROWAVE IND., INC.
A	RELEASED	RR	1/28/04		CHECKED			
ZONE	LTR	DESCRIPTION	APV	DATE	APVD	RR	1/28/04	SIZE L MFG CODE 53263 H-xxS SEALED SER.
REVISIONS					APVD			SCALE: NONE UNIT WT. SHEET 1 OF 1
								B
								REV.