

SPECIFICATIONS;
 FREQ RANGE (GHz) — 75.0 - 110.0
 VSWR — 1.20 : 1 MAX
 INSERTION LOSS — 0.40 db, MAX
 ISOLATION — 50 db, MIN
 SWITCHING TIME — 50 mSec, TYP
 PRESSURE — TO 30 PSIG (R-F HEAD)
 FINISH — IRIDITE ON FLANGES, SATIN BLACK ENAMEL ON BODY.

NOTES:
 1. ** MANUAL SWITCH DOES NOT INCLUDE RECEPTACLE.
 2. BLUE BOXES ARE REQUIRED FIELDS.
 3. !! IF OPTION IS NOT REQUIRED, LEAVE (GOLD BOX) BLANK

VOLTAGE	AMPS	CODE
+22 TO +32	0.9	A
-22 TO -32	0.9	B
+10 TO +14	1.5	C
-10 TO -14	1.5	D
+44 TO +54	0.5	E
-44 TO -54	0.5	F
117VAC	0.5	H
235VAC	0.5	K
MANUAL **		M

PART NO. SELECTION

!! OPTION	CODE
METRIC THREAD	M

CODE	FLANGE
P	PLAIN (ROUND)

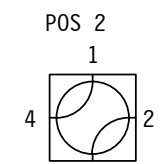
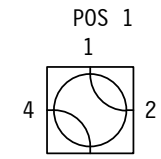
!! OPTION	CODE
SPDT	1

(THIS SERIES FOR CIRCUIT NO's 2, 3, 4, 5, 5A, 6 & 6A)

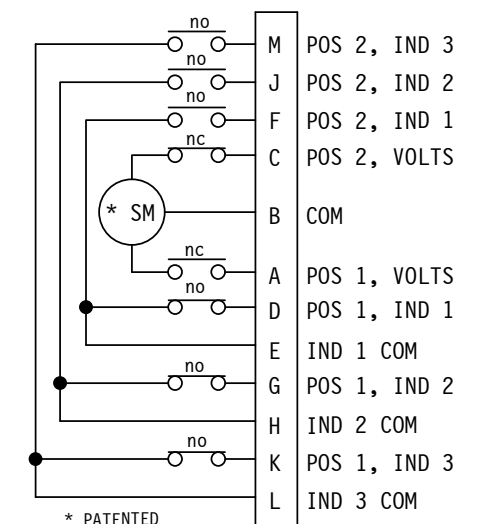
10		P			
PART NO. SERIES	10	CODE	FAILSAFE	F	
		!! OPTION	CODE		

ELECTRICAL CIRCUIT (INSERT CIRCUIT #) SEE SCHEMATIC PAGE

PART NO. EX.: 10AP3
 WR10 LATCHING WG SWITCH, +28VDC, PLAIN ROUND FLANGE, CIRCUIT #3.



R-F PATHS



* PATENTED
 ELECTRICAL CKT # 3
 Shown in Position 1
 THREE FORM C's

ZONE	LTR	DESCRIPTION	APV	DATE
	A	RELEASED.	TN	7/25/06
REVISIONS				

TOLERANCES: DECIMALS 2 PLACES: +/- .03 3 PLACES: +/- .010 FRACTIONS: +/- 1/32 ANGLES: +/- 1/2 deg.	DRAWN	AC	7/25/06
	CHECKED		
	APVD	RR	7/25/06
	APVD		

SECTOR MICROWAVE IND., INC.
 WR10 WG SW. : LARGE CKT SERIES
 SIZE L CAGE CODE **53263** WR10 LRG CKT SER. A
 SCALE: NONE UNIT WT. SHEET 1 OF 1 REV.

WEB SITE: www.sectormicrowave.com