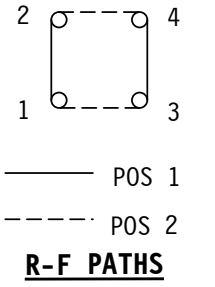
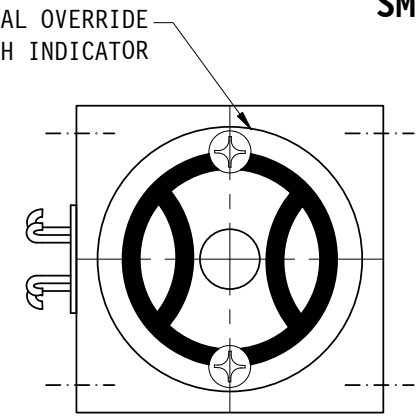
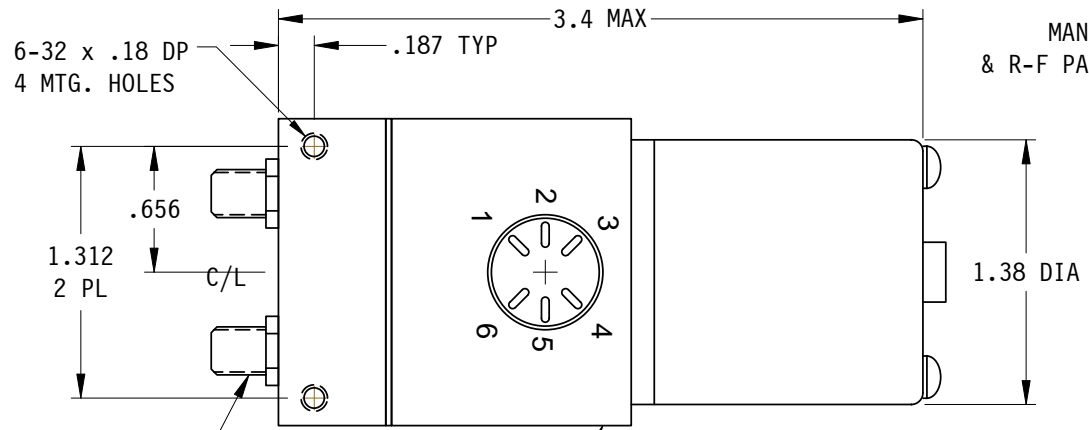
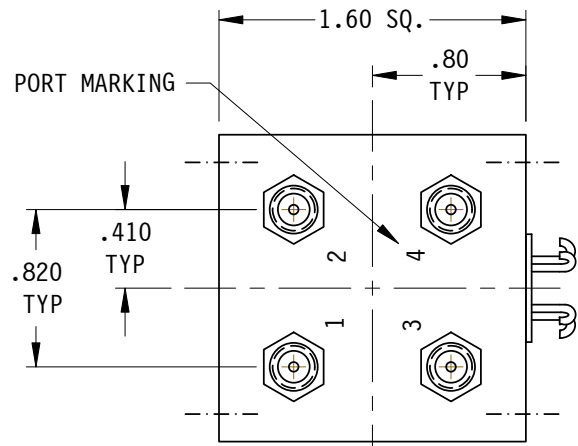


**SM7xH-xxH SER.**



**PART NO. SELECTION**

VOLTAGE	AMPS	CODE
+22 TO +32	0.9	A
-22 TO -32	0.9	B
+10 TO +14	1.5	C
-10 TO -14	1.5	D
+44 TO +54	0.5	E
-44 TO -54	0.5	F
117VAC	1.2	H
235VAC	0.5	K
MANUAL **		M

R-F CONN	CODE
SMA	SH-
BNC ##	BH-
TNC ##	TH-

CODE	FREQ RANGE (GHz)
1	0-1
2	0-2
3	2.1-2.7
4	3.7-4.2
5	5.9-6.5
6	7.2-7.8
7	7.9-8.4
11	10.9-11.7
12	11.7-12.2
13	12.2-12.7
14	14.0-14.5
15	10.0-15.0
20	0.0-18.0

**OPTIONS**

CODE	!! OPTION
57	50 OHM BNC/TNC USED @75 OHM
75	75 OHM BNC/TNC

CODE	!! OPTION
-9	EXTENDED SHAFT

CODE	!! OPTION
M	METRIC THREAD
	!! OPTION

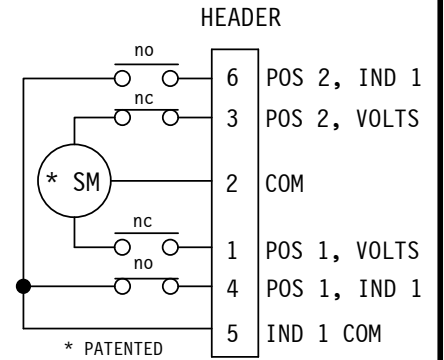
**SMI LABEL MUST BE PUT ON SIDE OF SWITCH.**

R-F CONNECTOR (4) SEE P/N SELECTION.

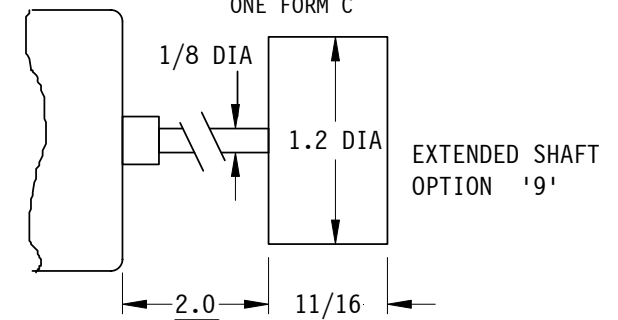
**SPECIFICATIONS;**

FREQ RANGE (GHz)	0-1	1-2	2-6.5	6.5-11	11-15	15-18
VSWR	1.10	1.15	1.25	1.30	1.35	1.50
INS. LOSS db, MAX	0.05	0.10	0.25	0.30	0.35	0.5
ISOLATION db, MIN	80	70	60	60	50	50

- R-F POWER — 50 WATTS, MAX
- R-F CONTACTS — BREAK-BEFORE-MAKE CONTACTS
- LIFE — 100,000 OPERATIONS
- DRIVE — LATCHING SECTOR MOTOR
- FINISH — SATIN BLACK ENAMEL



STD. ELECTRICAL CKT. Shown in Position 1 ONE FORM C



**NOTES:**

- ## BNC & TNC AVAILABLE FROM 0-2 GHz ONLY.
- \*\* MANUAL SWITCH DOES NOT INCLUDE RECEPTACLE.
- BLUE BOXES ARE REQUIRED FIELDS.
- !! IF OPTION IS NOT REQUIRED, LEAVE (GOLD BOX) BLANK.

<b>SM7</b>				<b>H</b>
PART NO.	SM7	6 PIN HEADER	H	
SERIES	CODE	RECEPTACLE	CODE	

PART NO. EX.: SM7SH-A4HM-9

SMA COAXIAL SW., +28 VDC, FREQ RANGE 3.7 TO 4.2 GHz, 6 PIN HEADER, METRIC THREADS, EXTENDED SHAFT WITH KNOB

ZONE	LTR	DESCRIPTION	APV	DATE
	B	ADDED NOTE ABOUT LABEL PLACEMENT.	TN	12/19/05
	A	BNC & TNC FREQ RANGE WAS 0 TO 1 GHz.	JP	6/6/95
<b>REVISIONS</b>				

TOLERANCES: DECIMALS 2 PLACES: +/- .03 3 PLACES: +/- .010 FRACTIONS: +/- 1/64 ANGLES: +/- 1/2 deg.	DRAWN	A.C.	2/20/90
	CHECKED		
	APVD	J.P.	2/20/90
	APVD		

<b>SECTOR MICROWAVE IND., INC.</b>			
COAX SW.; LATCHING; HEADER OVER HOLES			
SIZE	L MFG CODE	53263	SM7xH-xxH SER.
SCALE: NONE	UNIT WT.		SHEET 1 OF 1
			REV.